



# ASM Technologies Limited

[www.asmltd.com](http://www.asmltd.com)

## Oracle Solution Provider

**ORACLE** PARTNER

INTEGRATED USING

**ORACLE**

APPLICATION INTEGRATION  
ARCHITECTURE

**ORACLE** APPROVED  
EDUCATION CENTER

## Profile

- Public Listed Company in India (www.asmltd.com)
- Offices in India, Singapore, USA (Chicago & Toledo) and UK
- Focus on Enterprise Applications, Engineering Services and Technology Solutions
- Certified in ISO-9001:2000 and Appraised at CMMI ML3
- Industry Verticals: Manufacturing & Distribution, Oil & Gas, Hi-Tech, Consumer Electronics, Building Products, Agriculture, Telecom, Public Sector and Retail



## Oracle Consulting and Application Maintenance Services

As an Oracle Partner, ASM is dedicated to delivering innovative and leading-edge solutions based on Oracle Applications and Supporting Oracle in the market. ASM's consultants are experts in Implementing and Integrating Oracle Applications and Supporting Technologies as part of the overall Architecture.

### Service Offerings

Pre-Implementation	Product Assessment Services   Solution Roadmap and Strategy Planning   Gap Analysis   Implementation Improvement Assessment   Version Migration Assessment
Implementation	Core Implementation   End to End Project Management   Customization   Data Conversion   Integration with 3 <sup>rd</sup> Party products   Key User training
Upgrades & Migration	Upgrades   Platform Migration   Re-Implementation   ERP Migration
Applications Support	Application Support and Bug Fixing   DBA Support / Administration   Helpdesk Support using SLA Framework   1 <sup>st</sup> and 2 <sup>nd</sup> Level Support   Monitoring and trouble-shooting   Performance Tuning   Data Analysis and reporting
Value Added Services	Testing Services   Additional End User Training   Improvement Assessment

### Oracle eBiz Services

#### Service Offerings

Oracle eBiz Implementation | Oracle eBiz Upgrade | Oracle eBiz Integration | Oracle eBiz Development and Interface Services | Oracle eBiz Conversion | Oracle eBiz Testing Services | Oracle eBiz Education Services | Oracle eBiz Application Maintenance Services

#### Module Expertise

Financials | Contracts | Procurement | CRM | Projects | SCM | Manufacturing | Order Management | PLM | Learning Management | Customer Interaction Center

### PeopleSoft Services

#### Service Offerings

PeopleSoft Implementation | PeopleSoft Upgrade | PeopleSoft Integration | PeopleSoft Development | PeopleSoft Conversion | PeopleSoft Testing Services

#### Module Expertise

HCM | Financials | SCM | Campus Solutions | Asset Lifecycle Management | Enterprise Performance Management | Enterprise Portal | PeopleSoft Enterprise Tools & Technology

### Siebel Services

#### Service Offerings

Siebel Implementation | Siebel Upgrade | Siebel Integration | Siebel Development | Siebel Outsourcing Services | Siebel Management Services | Siebel Testing Services | Siebel Education Services

#### Module Expertise

Sales | Marketing | CRM On Demand | Self Service & eBilling | BI Applications | Contact Center and Service | Contact Center Infrastructure | Quote & Order Capture

# Database Administration Services



## Oracle Apps and Core DBA Practice

- 24/7 Support
- Complex Architecture and Design
- Specialist in RAC and Grid Computing
- Proactive Monitoring and Capacity Management
- Performance Tuning
- Well Established Change Management Process
- Dedicated Root Cause Analysis Team
- Advanced Customer Support Desk
- Quality Delivery and Strict SLA
- Impeccable Clone and Patching Process
- Reliable Backup and Recovery Process
- Stabilization Solutions for all components
- Data Center and Platform Migrations
- High Availability Solutions for Applications and Database
- Point Release Upgrades and Consolidated Periodic Upgrades
- Advocacy with Oracle Support



## Key Benefits

- Transaction based Remote DBA Services
- Reduced occurrences of database failures
- Reduced downtime during failures
- Better database performance
- Increased response time from system
- Reduced IT budget
- Database becomes easier to administer by your employees due to ASM's documentation standards
- Helps over-worked DBAs focus on their most important responsibilities by allowing ASM to take responsibility for the daily maintenance

# Application Integration Architecture Services

INTEGRATED USING

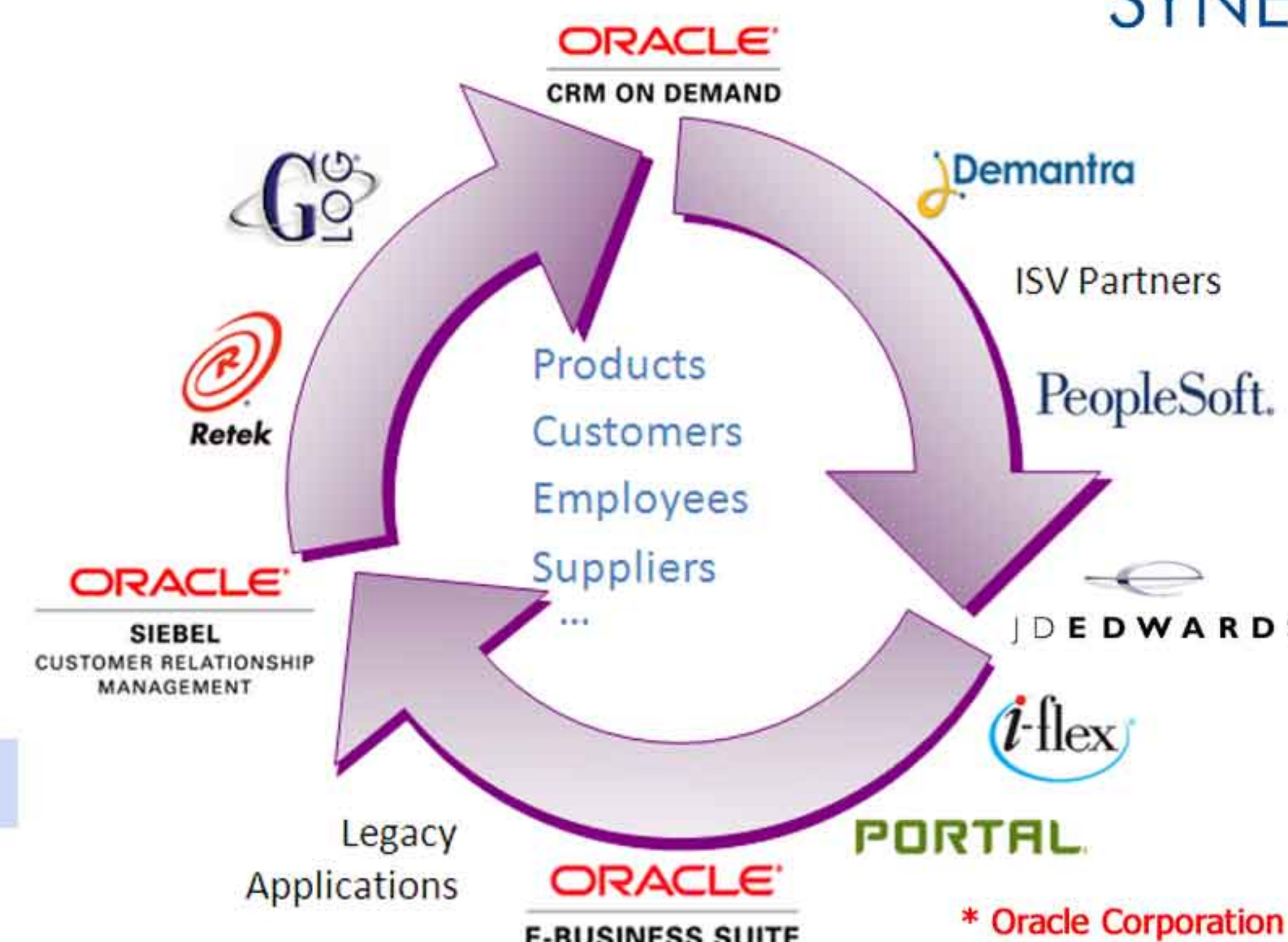
**ORACLE**

APPLICATION INTEGRATION ARCHITECTURE

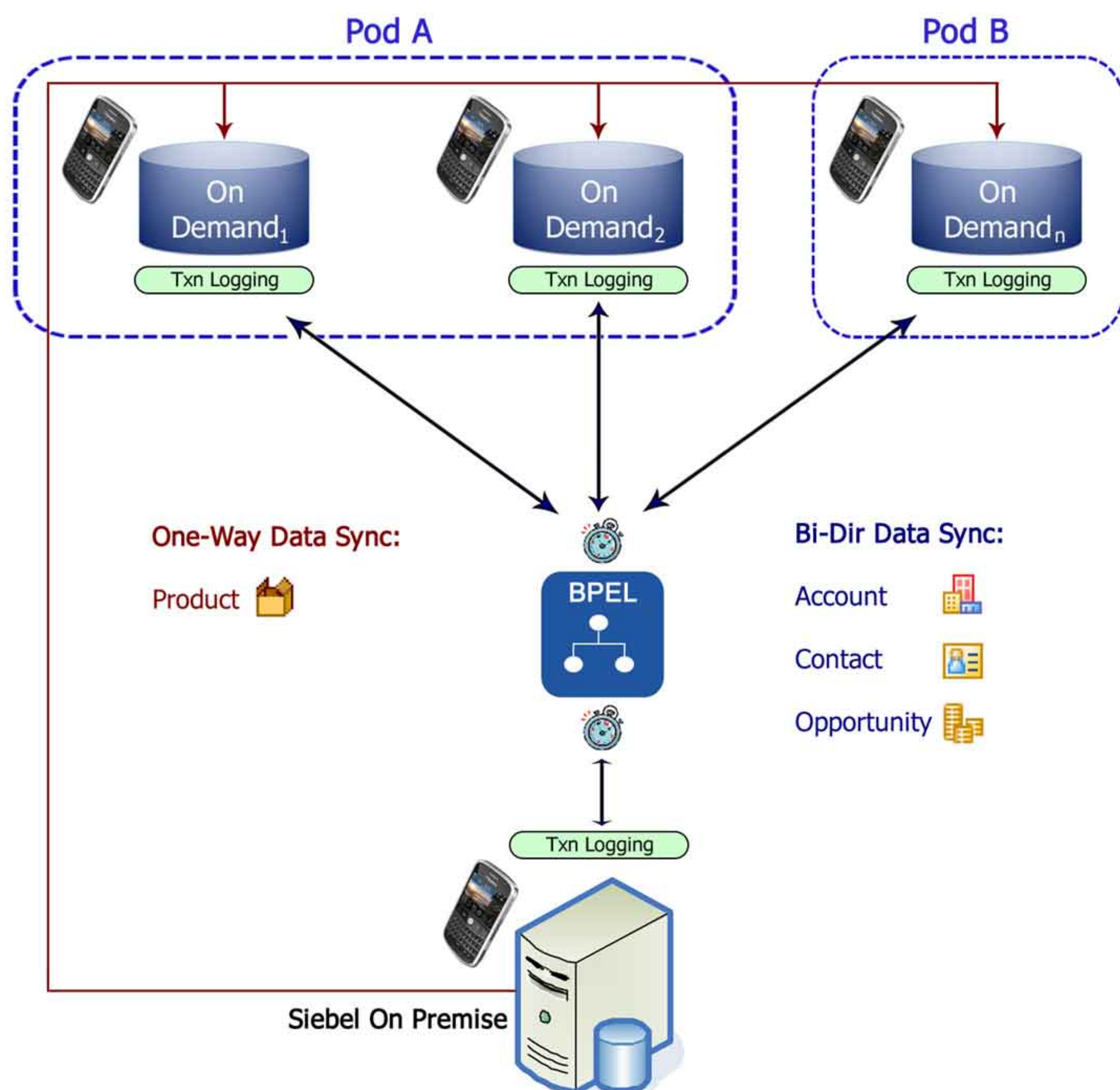


## Oracle Integration and COE

- ASM expertise in AIA/SOA fusion middleware
- Co-Development partnership with Oracle
  - Oracle Application Server and Web Services
  - OracleAS Adapter (XML Gateway)
  - Inbound & Outbound Messaging
  - XML Publisher, BPEL Manager and JDeveloper
  - Java/J2EE, Java Messaging (JMS) and JNDI Messages
  - Other App Servers – APACHE, JBoss, Weblogic and Websphere
- On Premise–On Demand (OPOD) PIP, Telco PDM PIP Install / Extension



## Siebel CRM On Premise to Oracle On Demand (OPOD) PIP



### Key Features

- Siebel 7.8/8x and OD R15
- Bi-Directional Data Integration: Account, Contact and Opportunity
- One-Way Product Data Sync (OP to OD)
- Integrated PIM/Siebel Remote Sync Support
- Entity Cross Referencing in Middle Tier
- OP & OD Transaction Logging
- Hybrid ODOP Team Collaboration
- Improved Installation Procedures

## OPOD Integration Key Benefits

- Seamless deployment options and easy transition
- OP-OD enables easy and quick outsource or in source specific applications
- OP-OD enables strategic growth by building innovating on top of OP deployment and sharing that across the OD Installations
- No disruption of user adoption or customer relationships during the transition of the software deployment model

## Siebel OP CRM to Oracle OD CRM Integration Implementation Offerings

### Standard Objects

- Installation mapping of custom objects (Accounts, Contacts, Opportunities, and Products)
- Initial data loads to and from both systems

### Non Standard Objects

- Installation, Map existing / custom fields OD and OP
- Configure new EAI Business Services for On Premise side
- Assist with the initial data loads to and from both systems

### For more Information Contact:

**Bangalore (India)**  
 ASM Technologies Limited,  
 80/2, Lusanne Court, Richmond Road,  
 Bangalore – 560 025  
 Phone: +91 80 6696 2300  
 Fax: +91 80 2227 3606

**Chicago (USA)**  
 ASM Technologies Limited,  
 2020 Calamos Court, Suite 200  
 Naperville, IL 60563-2793  
 Phone: +1 630 799 1563  
 Fax: +1 630 799 1562

**Toledo (USA)**  
 ASM Technologies Limited,  
 7071 W.Central Ave.  
 Toledo, Ohio 43617  
 Phone: +1 419 843 2571  
 Fax: +1 419 843 2702

**Singapore**  
 Advanced Synergic Pte Limited  
 30 Toh Guan Road, #08-03A  
 ODC DistriCenter, Singapore - 608840  
 Phone: +65 62705737  
 Fax: +65 63245345

E-Mail: [info.oracle@asm ltd.com](mailto:info.oracle@asm ltd.com)

[www.asmltd.com](http://www.asmltd.com)